

who are we?

Founded in 1871, the Institution of Electrical Engineers is the largest professional engineering society in Europe and has a worldwide membership of just under 140,000. These men and women, who have joined together to promote the advancement of electrical, electronic and manufacturing science and engineering, range from students to the most distinguished and highly qualified members of the profession.

Some things we do

Represent the profession of electrical, electronic, manufacturing and systems engineering and related sciences

Act as the voice of the profession in matters of public concern and assist Government to make the public aware of technological issues

Operate a Career Advisory Service to give advice and assistance to members on various aspects of career development

Provide an extensive range of lectures, meetings, conferences, seminars, residential vacation schools and publications.



*Savoy Place, London
(IEE HQ)*

Savoy Place
London
England
WC2R 0BL

Phone: +44 (0)20 7240 1871

Fax: +44 (0)20 7240 7735

Website: www.iee.org

The Institution of Electrical Engineers



Why should I join the IEE?

An Informal Guide to the
Benefits of IEE Membership



The Institution of Electrical Engineers

Essex Branch

Who am I & why should I join?

What is my occupation?

As our name suggests, the Institution of Electrical Engineers has many members who are electrical engineers, but we also include each of the following professions plus many more:

- Manufacturing Engineering
- Electronic Engineering
- Computer Systems & Software Engineering
- Science & Education
- Project Management

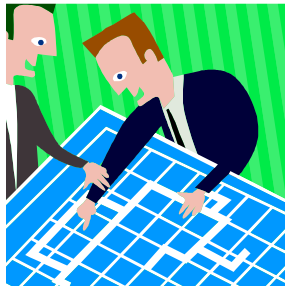
Where do I work?

IEE members work for companies of all sizes from the biggest blue chip companies through to local small engineering companies.

How old am I?

Members range from students on courses at university to retired members.

The IEE has many active Younger Members Sections for those under the age of 30.



What kind of people join the IEE?

To keep my knowledge up to date

- Regular lectures on topical subjects
- A range of publications including IEE News, IEE Review, and your choice of specialist magazine
- Training courses encompassing technical skills, business awareness and life skills
- By participating in the IEE Continuous Professional Development (CPD) scheme

To become a chartered engineer

- If you have the right qualifications and experience you can achieve Chartered Engineer (CEng) status with the IEE
- This will show your continued advancement within the profession and will help when applying for new jobs both at home and abroad

So I can meet new people

- Much of what the IEE is about is meeting new people.
- This can be networking to make professional contacts, or on a purely social basis

Plus...

- Free use of IEE central services, such as the dedicated engineering library
- Personal email address— abc@iee.org
- Take part in on-line discussion forums relevant to your work

- Careers advisory service & job opportunities through the IEE Recruitment News
- A range of specially negotiated IEE discounts
- Careers advice through the IEE mentoring scheme

And in Essex

- Here in Essex our main committee and the younger members committee are both very active
- We put on a full program of events such as “The history of radar” and “Voice recognition systems in the Jaguar S-Type”
- Please feel free to email us, or alternatively visit our website for all the latest information



For further information about joining the IEE, please see our website

The Institution of Electrical Engineers

Essex Branch contact information:

Email: events.essex@iee.org

Website: <http://centres.iee.org/Centres/Essex/>